

Embossed Wood - Geometrix™ Collection



1



2



3

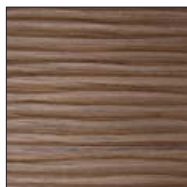
- 1 Embossed Wood - Geometrix™ Collection • Black • WPAEW560
- 2 Embossed Wood - Geometrix™ Collection • Lacquerable Foil (primed) • WPAEW547
- 3 Embossed Wood - Geometrix™ Collection • Walnut • WPAEW479



Embossed Wood - Geometrix™ Collection



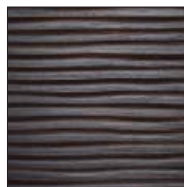
This collection of dimensionally created wall panels offers a new range of geometric patterns to a favorite product, Embossed Wood. The textured surfaces are available single or double sided, in four wood veneers, black, and a lacquerable foil. There are over 500 product variations for the 11 patterns in this collection, please consult our technical specialists for your specific project requirements. The Geometrix™ Collection combines state of the art technology and avant-garde designs with matte and high gloss finishes for an extraordinary effect. This product has Blue Angel certification, the first worldwide environmental label, for no added urea-formaldehyde. Please note that variations in color and texture may occur due to the nature of the material. For updates and complete collection offerings and specifications, please visit www.archsystems.com.



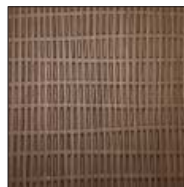
Walnut
WPAEW411



Dark Oak
WPAEW423



Dark Oak
WPAEW447



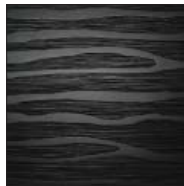
Walnut
WPAEW479



Black
WPAEW499



Lacquerable Foil
(primed)
WPAEW511



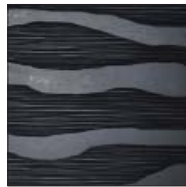
Black
WPAEW541



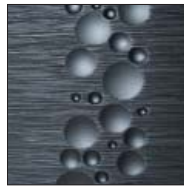
Light Oak
WPAEW551



Lacquerable Foil
(primed)
WPAEW565



Black
WPAEW569



Black
WPAEW575

Specifications

Size:

Standard: 41" x 96", also available in 50.4" x 122" for select patterns

Thickness:

Panels are available in 4.5mm, 5mm, 6mm, 9mm, 18.5mm, and 21mm depending on pattern. Please refer to www.archsystems.com for each variation and the corresponding Skus.

Veneers:

Light Oak, Dark Oak, Walnut, Teak, Black, and Lacquerable Foil (primed)

Construction:

All embossed veneers are on an MDF core

- Some patterns may only be available as embossed both sides, please refer to www.archsystems.com for each variation and the corresponding Skus.
- Edge-banding is available on full size 18.5mm panels and custom cut-to-size orders
- Custom colors can be specified for lacquerable foil veneer

Finish:

Panels available finished or unfinished

- **Five sheet minimum order**
- **Sku listed is for 4.5mm thickness, except for WPAEW499 & WPAEW511 shown in 9mm**
- **LEED®:**
Can contribute to LEED® ID Credit 1: Innovation in Design

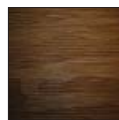
Available in:



Light Oak



Dark Oak



Walnut



Teak



Black



Lacquerable Foil
(primed)



ARCHITECTURAL SYSTEMS, INC.

Tel: 800.793.0224 • Fax: 800.793.0225 • sales@archsystems.com

www.archsystems.com