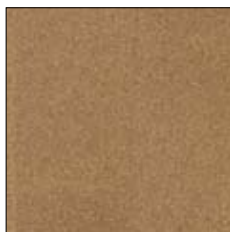


Architectural Systems is proud to continue our association with Wicanders, the most respected manufacturer of cork flooring. The glue down tiles or floating planks provide comfort and sound absorption in a renewable material that combines the benefits of improved appearance with performance. **Cork Flooring** comes in a sophisticated palette of warm colors and each series offers superior wear resistance technology applied to the surface layer. Please note that variations in color and texture may occur due to the nature of the material.

Cork Comfort Glue-down WRT

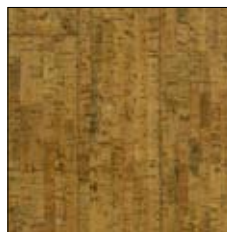
Originals



Natural
FLWIA041



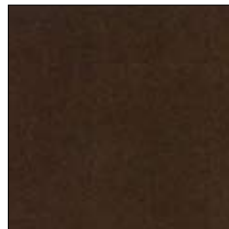
Harmony
FLWIA042



Character
FLWIA043



Natural Dark
FLWIA044



Natural Medium
FLWIA045



Accent
FLWIA079

Nuances



Castagna
FLWIA049



Mele
FLWIA048

Specifications

Size:

Standard: 24" x 12"

Thickness:

5/32"

Finish:

Xtreme WRT (Wear Resistance Technology) finish with ceramic micro-bead technology is factory applied

Installation:

Glue down

- GreenGuard Indoor Air Quality Certified
- 100% Recycled Content

LEED®:

Can contribute to LEED® MR Credit 4: Recycled Content, MR Credit 6: Rapidly Renewable Materials, EQ Credit 4.1: Low-Emitting Materials (Adhesive & Sealants), ID Credit 1: Innovation in Design

- In-stock products are subject to availability. For updates and complete collection offerings and specifications, please visit www.archsystems.com.

*Cork Flooring is available exclusively (in New York and New Jersey) through Architectural Systems, Inc.

Wicanders and Architectural Systems are both recognized members of USGBC and FSC Chain of Custody Certified

Cork Comfort Floating Floor HPS

Originals



Harmony
FLWIA051

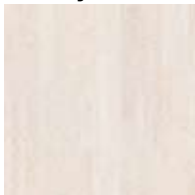


Accent
FLWIA053



Rhapsody
FLWIA169

Identity



Timide
FLWIA054



Chestnut
FLWIA056



Tea
FLWIA114



Secrets
FLWIA115

Slate



Arctic
FLWIA147



Moccaccino
FLWIA148



Eclipse
FLWIA149

Petra



Copper
FLWIA150



Taupe
FLWIA151

Scoria



Twilight
FLWIA152



Burgundy
FLWIA153



Merlot
FLWIA154



Pine
FLWIA155

Specifications

Thickness:

15/32"

Width:

11 5/8" nominal
Skus FLWIA051-FLWIA115 and
FLWIA169

17 1/2" nominal
Skus FLWIA147-FLWIA155

Length:

35 5/8" nominal
Skus FLWIA051-FLWIA115 and
FLWIA169

23 7/8" nominal
Skus FLWIA147-FLWIA155

Finish:

Factory applied, durable anti-scratch HPS (High Performance Surface) finish for high traffic commercial spaces

Installation:

CorkLoc Floating Floor System

- Please note that variations in color and texture may occur due to the nature of the material
- CorkProtect all around edge sealing system used as a moisture barrier
- GreenGuard Indoor Air Quality Certified
- 45.8% Recycled Content

LEED®:

Can contribute to LEED® MR Credit 4: Recycled Content, MR Credit 6: Rapidly Renewable Materials, EQ Credit 4.1: Low-Emitting Materials (Adhesive & Sealants), ID Credit 1: Innovation in Design

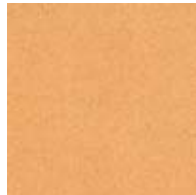
- In-stock products are subject to availability. For updates and complete collection offerings and specifications, please visit www.archsystems.com.

*Cork Flooring is available exclusively (in New York and New Jersey) through Architectural Systems, Inc.

Wicanders and Architectural Systems are both recognized members of USGBC and FSC Chain of Custody Certified

Cork Comfort Glue-down HPS

Originals



Natural
FLWIA134



Harmony
FLWIA162

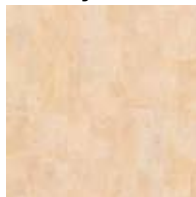


Accent
FLWIA163



Rhapsody
FLWIA164

Identity



Champagne
FLWIA135



Silver
FLWIA139



Tea
FLWIA167



Secrets
FLWIA168

Slate



Moccacino
FLWIA156

Petra



Copper
FLWIA159



Taupe
FLWIA160

Pebbles



Storm
FLWIA137



Autumn
FLWIA157



Fog
FLWIA158

Specifications

Size:

24" x 12"
Skus FLWIA134-135,
FLWIA139, FLWIA162-168

24" x 18"
Skus FLWIA137, FLWIA156-
160

Thickness:

1/8"

Finish:

Factory applied, durable anti-scratch HPS (High Performance Surface) finish for high traffic commercial spaces

Installation:

Glue Down

- Please note that variations in color and texture may occur due to the nature of the material
- GreenGuard Indoor Air Quality Certified
- 76.5% Recycled Content

LEED®:

Can contribute to LEED® MR Credit 4: Recycled Content, MR Credit 6: Rapidly Renewable Materials, EQ Credit 4.1: Low-Emitting Materials (Adhesive & Sealants), ID Credit 1: Innovation in Design

- In-stock products are subject to availability. For updates and complete collection offerings and specifications, please visit www.archsystems.com.

*Cork Flooring is available exclusively (in New York and New Jersey) through Architectural Systems, Inc.

Wicanders and Architectural Systems are both recognized members of USGBC and FSC Chain of Custody Certified