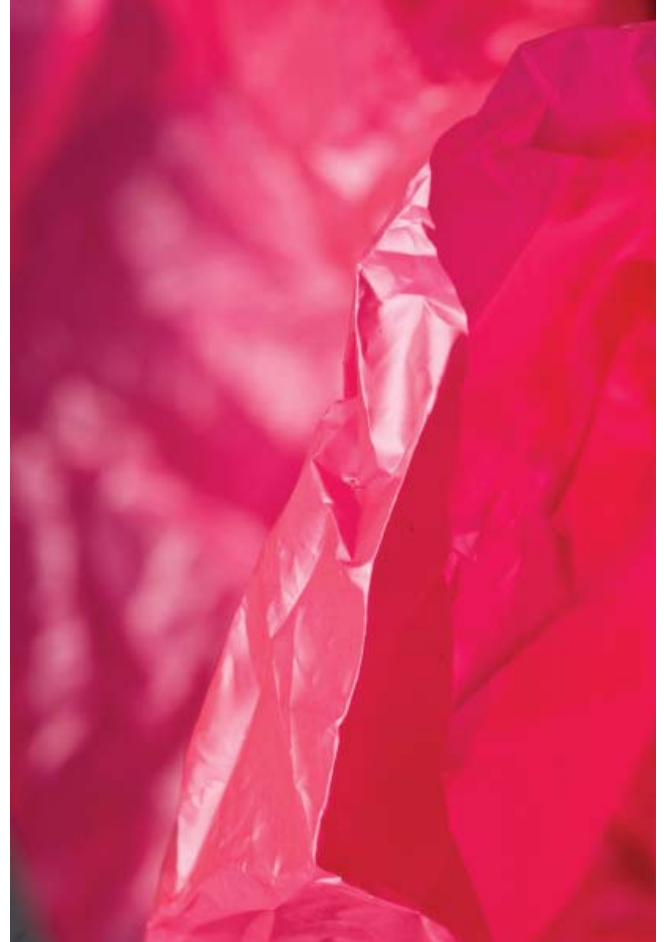


MATERIAL OF THE WEEK

MC# 6254-01

Biodegradable and compostable PLA-blends for foil applications. These granulates consist of different percentages of PLA (polylactide), further biodegradable polymers as well as mineral fillers. Four mixtures are offered for different applications. The foils can be printed with common printing methods without any problem or also dyed with masterbatches. The material withstands temperatures of up to 176 °F (60°C) whereas the extrusion temperature is significantly higher as that of other biodegradable composites. Because the polymer-compound is completely homogenous, blow-extruded foils with a thickness of up to 8 micrometer can be achieved. The material is suitable for various processing methods like laminating, blow forming, injection molding and extrusion coating. The foils feature a more pleasant haptic than pure polyester or polyester-starch-composites. The material is biodegradable, compostable (according to EN 13432 and is certified by a declaration of no objection for food contact [F25]. The lead time is about 5 weeks, whereas the manufacturer indicates a limited availability in 2008 and 2009. Applications are for blow foils, cast foils, co-extruded products, packaging, shopping bags, mulch foil, garbage bags as well as technical parts. ■

This column is published in collaboration with Material ConneXion. For more information regarding the material previewed, please contact Michael LaGreca at mlagreca@materialconnexion.com. T: 212.842.2050.



PRODUCT INTRO

> **Architectural Systems, Inc., NYC, introduced Vencork, a floor product that combines real wood veneers with a cork substrate.** Vencork comes in a range of color options, from light to dark, with custom capabilities. It also features an anti-scratch transparent polyvinyl chloride finish. www.archsystems.com

> **Knoll Luxe released a new interior textile collection.**

Designed by *Jack McCollough* and *Lazaro Hernandez* from the fashion house, *Proenza*



ARCH SYSTEMS: VENCORK

Schouler, the six upholstery fabrics embody the designers' concept of "nonchalant luxury" and were inspired by their work on the runway. The collection includes:

- *Mepal*, a large scale silk and linen damask, inspired by the Fall 2007 Runway Collection. Mepal is the signature pattern of the group.

- *Sandis*, a pattern that translates an animal print from Spring 2008 into a graphic moiré-like woven wood grain.

- *Gates*, a glamorous solid texture fabric based on a sequined fabric used in an evening ensemble from Fall 2008.

- *Worth*, a hefty texture with a distinctive weave structure combining thick yarns to emulate brocade from a suit neckline and pockets in the Resort 2007 collection.

- *Canaan*, the foundation product in the mix, designed from a vest in the Spring 2007 collection.

- *Walker*, an ethnic, tribal aesthetic designed with an opposing twill-like pattern in a rectangular grid formation. <http://www.knoll-luxe.com>



KNOLL LUXE: PROENZA SCHOULER

> **Trendway introduced Pack for a complete filing and storage solution.** *Pack* offers a range of sizes, options, and finishes at a great value. With height options that support the lower profile design trends, *Pack* is designed for customer versatility and value. The *Pack* collection includes mobile personal storage options for flexibility at the individual workstation. In addition, it offers all of the components for volume storage needs. <http://www.trendway.com>



TRENDWAY:PACK

NOTEWORTHY

> **Christine Brady and Melissa Szeredy received Richard R. Smith Memorial Scholarships from ASID-IL.** Each was awarded a \$1,000 check to offset fees for tuition, books and supplies for the current school year. The Richard R. Smith Memorial Scholarship competition is based upon excellence in design. Applicants were given an "as built" footprint of a space that provides a small commercial retail store with an apartment for the proprietor. www.asidillinois.com

> **David M. Copley was appointed to the Board of Certification in Professional Ergonomics.** Mr. Copley is Vice President of Safety & Quality Management of *EMCOR Construction Services, Inc.* The BCPE is an independent nonprofit organization that seeks to advance knowledge of ergonomic issues through the certification of competent professionals. Mr. Copley has over 30 years of experience in safety and quality management within the construction and facilities services industries in the U.S. and the United Kingdom.



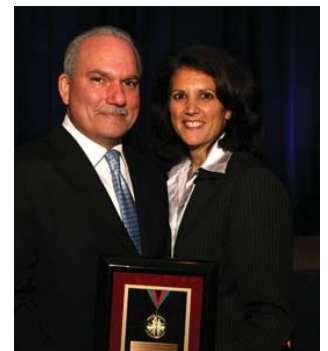
DAVID COPLEY

> **Jaime Correa, AIA's Urban Designer of the Year, released a book on self-sufficiency.** Mr. Correa offers a positive solution to global warming in the book, *SELF-SUFFICIENT URBANISM: a vision of contraction for the non-distant future.* The book is the result of two years of academic research on the effects of climate change and peak oil production on the organization of the city. According to Mr. Correa the existing configuration of urban areas will disappear and be replaced by a combination

of self-sufficient Urban Villages and Rural Settlements surrounded by small agricultural hinterlands. Only urban and rural areas that provide everything needed for daily living at walking distances will survive. The book can be purchased at Lulu, Amazon, Barnes and Noble and other search engines for \$37.75 or downloaded from <http://stores.lulu.com/selfsufficienturbanism> for \$15.00.

> **Lord Norman Foster of Foster + Partners received the International Highrise Award 2008 for the design of New York's Hearst Headquarters Tower.** This prestigious award, bestowed every two years by the city of Frankfurt am Main in Germany, includes a monetary prize of EUR 50,000. <http://www.highrise-frankfurt.de/en/index2.html>

> **Ted Moudis and Joanne Minieri were honored by Special Olympics New York.** Mr. Moudis is Senior Principal of Ted Moudis Associates and Ms. Minieri is President and Chief Operating Officer of Forest City Ratner Companies. The company leaders were



TED MOUDIS & JOANNE MINIERI