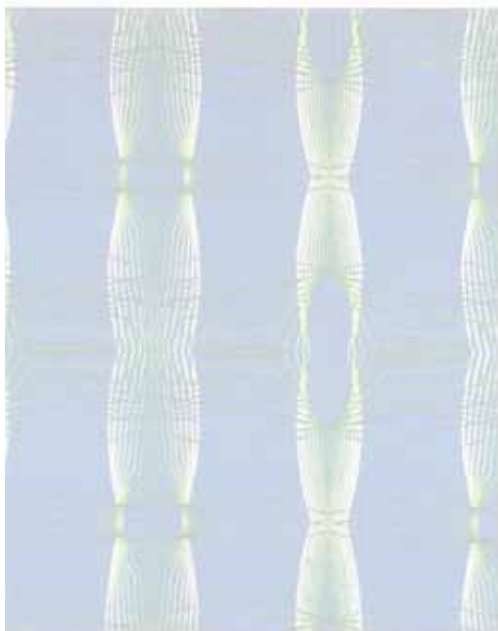


Roppe

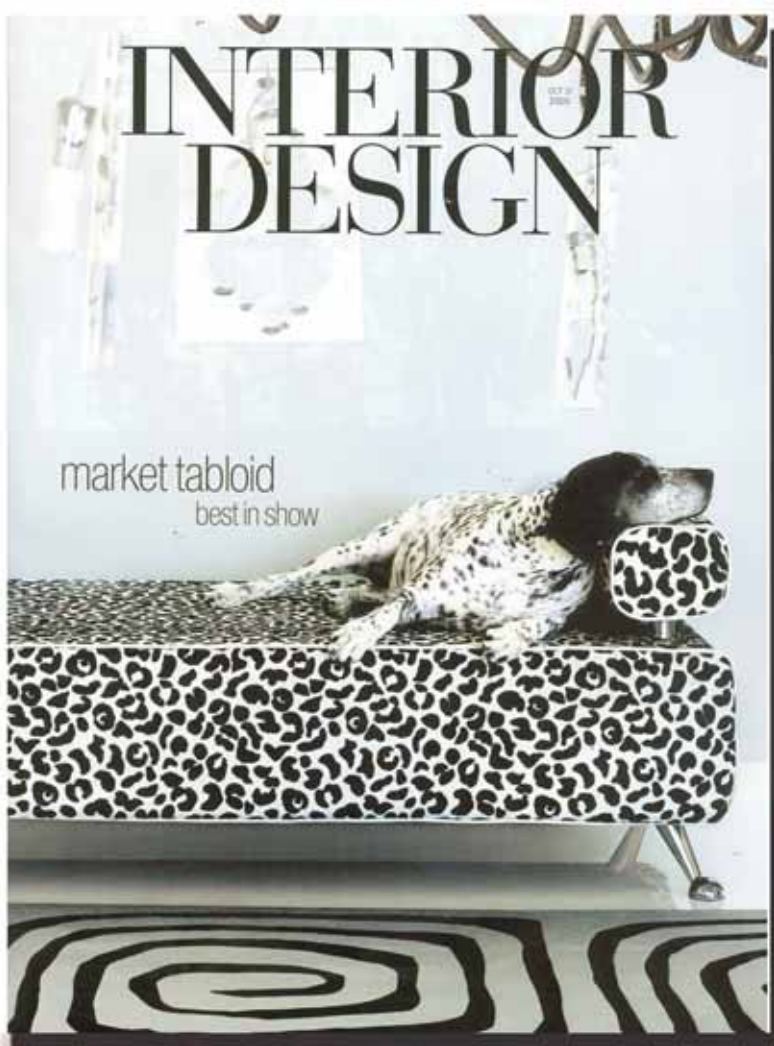
New shoe molding and top trim distinguish the profile of this manufacturer's **BaseMates** stackable trim. PVC-free and manufactured with 70 percent natural rubber, the 15 components will not shrink, gap, or separate. And they are easily added to existing installations of rubber base, to an updated look. P.O. Box 1158, 1402 North Union Street, Fosteria, OH 44633; 800-537-9527.

roppe.com; circle 541



Carini Lang

Natural dyes and dyes a thick, and called, the New spread by (rinchi) luxuriously as her dyes can be regular New York, NY 100 carinlang.com; e



Roubini

Designer Karim Rashid's **Spectra** rug from the Graphic Landscapes collection vibrates with technology. The digitally generated pattern is available in any custom colors, in silk and New Zealand wool. Custom sizes are possible. 200 Lexington Avenue, New York, NY 10016; 212-696-6640; roubinicasa.com; circle 544

Architectural Systems

The flashy metallic floor tiles in the aptly named **Shimmer** collection are made from resilient luxury vinyl. Sold with a thick wear layer, the straight-edged tiles, which are 12 or 24 inches square, are suitable for both floors and walls. Beveled edges are also offered. 150 West 25th Street, 8th Floor, New York, NY 10001; 800-793-0224; archsystems.com; circle 543

